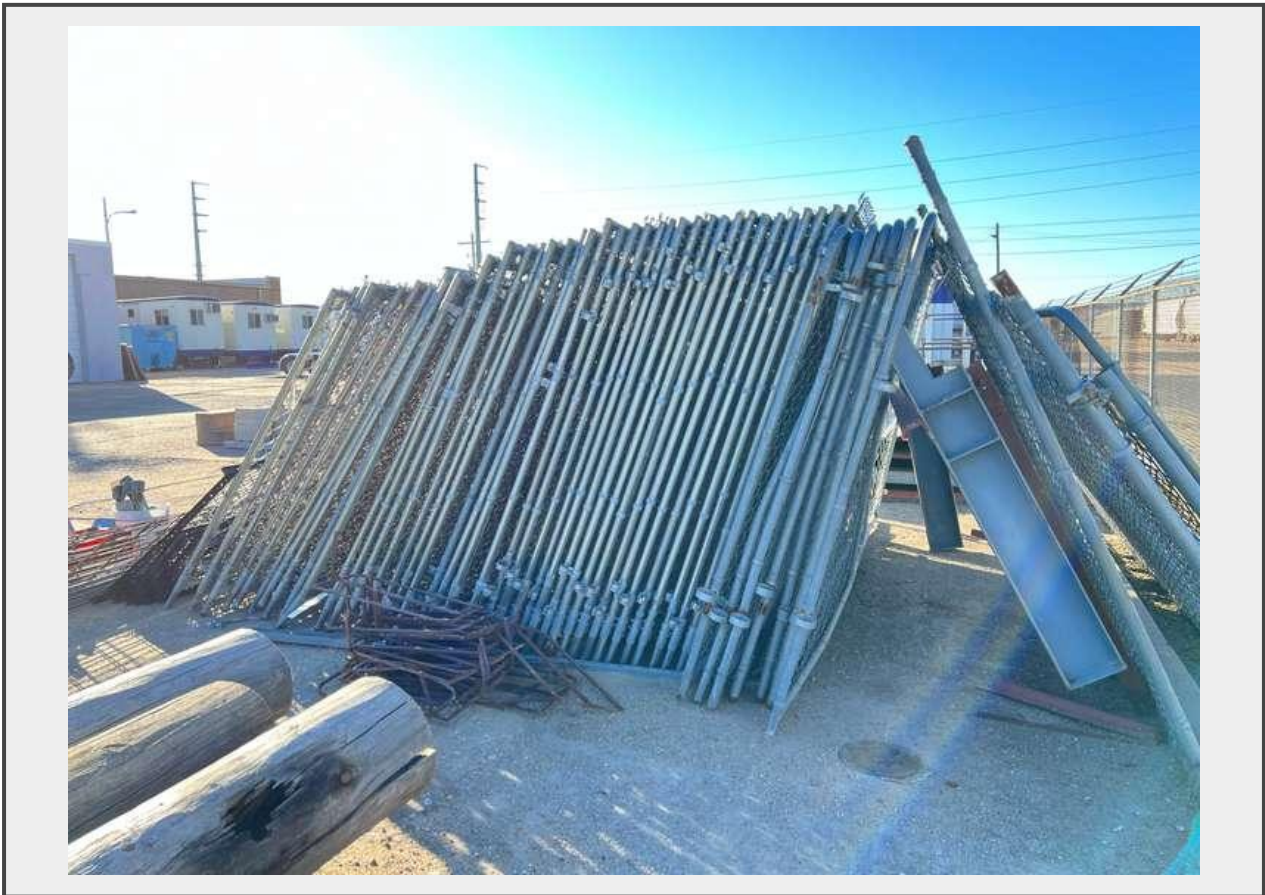


**Sale Name:** December 15th, 2022 Compton Construction Services Auction  
**LOT 16647 (Wichita, KS) - Construction Site Chain Link Fencing Barrier Materials**



**Description**

**Consignor:**

Compton Construction Services

**Location:**

1802 N Washington  
Wichita, KS 67214

**Contact Information:**

Gib Compton *(For inspection scheduling & questions about the listing.)*

(316) 262-8885

[gcompton@comptonconstruction.com](mailto:gcompton@comptonconstruction.com)

Tyler Francis *(For questions about the listing)*

316-734-7342

[tyler@gavelroads.com](mailto:tyler@gavelroads.com)

[Click here to sell items like this](#)

*(For all other website related questions call 316-425-7732)*

**Product Description:**

- This lot contains Construction Site Chain Link Fencing Barrier Materials.
- See pictures for more details.
- Personal inspections are recommended.

**Open House:**

**Friday, December 9, 2022 9:00am - 3:00pm**

1802 N Washington

Wichita, KS 67214

**Pickup:**

Gavel Roads will provide open pickup on the following days and times:

**December 15-16, 2022 9:00am - 3:00pm**

**December 19-21, 2022 9:00am - 3:00pm**

**ALL ITEMS MUST BE REMOVED BY December 30, 2022 12:00pm.** If items are not removed, buyers will be charged a **10% restocking fee** and lose rights to all items purchased. Buyer is responsible for any and all removal of equipment/items and assumes all risk of damages.

**Gavel Roads Information:**

*Phone number:* (316) 425-7732

*Hours:* Monday - Friday 8:30am to noon - 1:00pm to 5:00pm

*Address:* 12140 W K-42 Hwy, Wichita, KS 67227

[Click here for map location](#)

**Quantity:** 1



<https://www.gavelroads.com/>